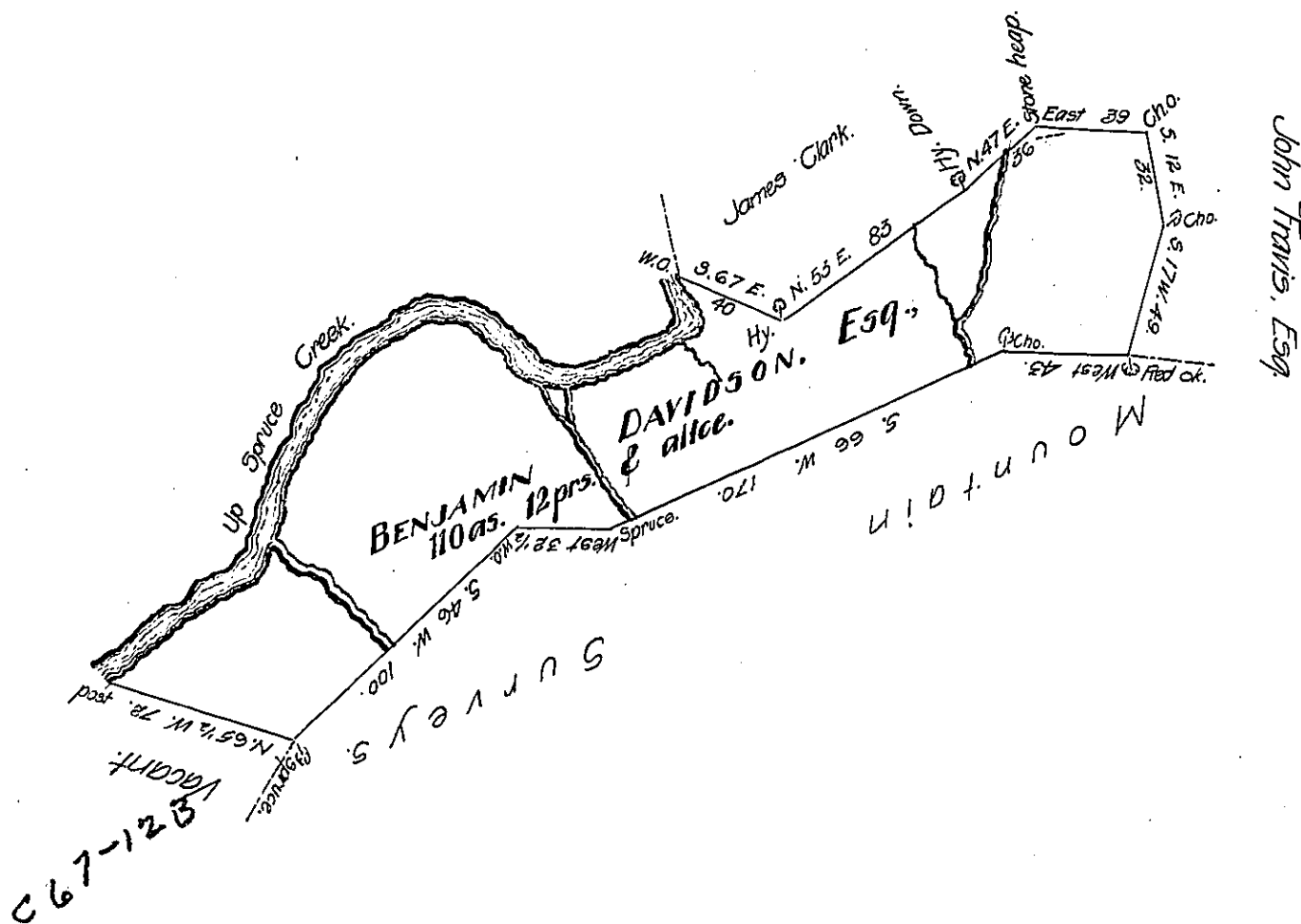


FORM No. 1.

COURSES UP
SPRUCE CREEK.

- S. 36 E. 20
- N. 43 E. 32
- N. 63 E. 24
- N. 16 E. 44
- N. 32 E. 38
- N. 62 E. 43
- S. 55 E. 44
- N. 73 1/4 E. 20
- N. 65 E. 38
- N. 21 W. 20



Situate in Franklin township Huntingdon County. Containing one hundred and ten acres 12 perches and allowance. Surveyed May 4th 1810, on a Warrant Granted to Benjamin Davidson, Esquire, dated Jan^y 3rd 1794.

Jn^r Morrison, D.S.

Andrew Porter, Esq. }
Surveyor General. }

IN TESTIMONY that the above is a copy of the original remaining on file in the Department of Internal Affairs of Pennsylvania, made conformably to an Act of Assembly approved the 16th day of February 1833, I have hereunto set my hand and caused the Seal of said Department to be affixed at Harrisburg, this twenty-fifth day of October 1907.

Henry Howard
Secretary of Internal Affairs.